

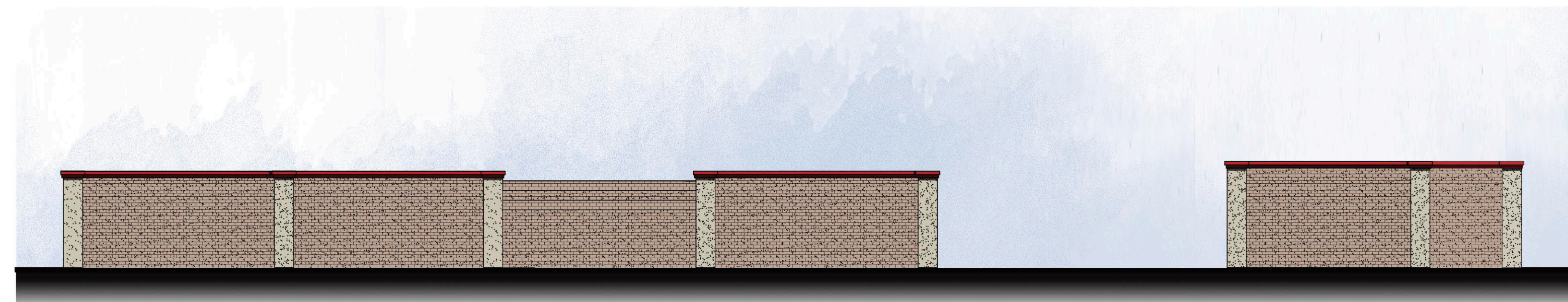
R.V. CANOPY 'B', 'C' & 'D' EAST ELEVATION

COLORS & MATERIALS

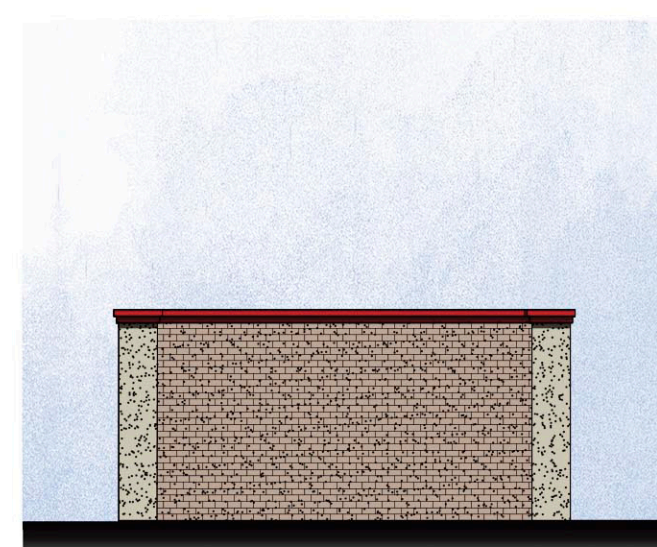
STUCCO FINISH WITH ELASTOMERIC PAINT FINISH:
PAINT SW#6101 "SANDS OF TIME"

PRECISION CMU WALL WITH ELASTOMERIC PAINT FINISH:
PAINT SW# 6162 "PORTABELLO"

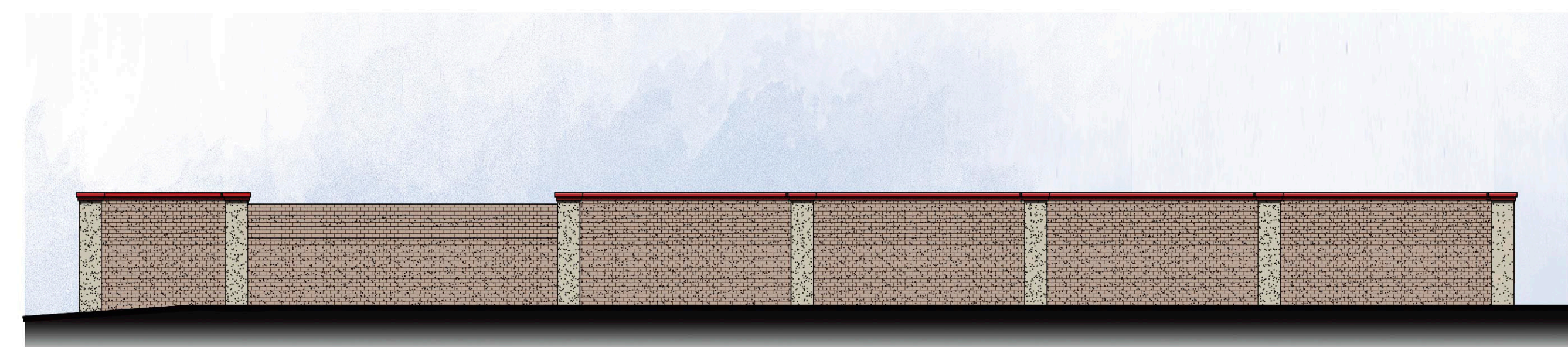
METAL CORNICE WITH ELASTOMERIC PAINT FINISH:
PAINT SW#6871 "POSITIVE RED"



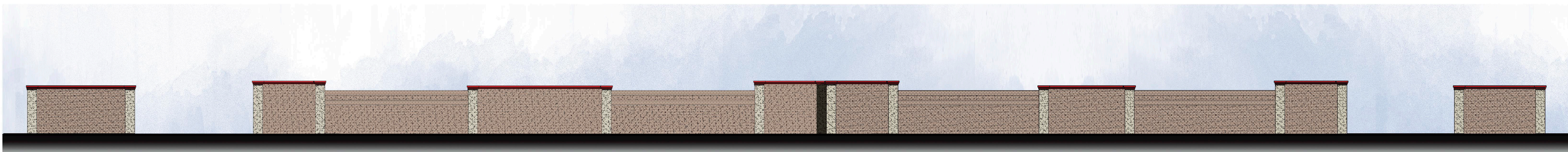
R.V. CANOPY 'D' & 'A' NORTH ELEVATION



R.V. CANOPY 'A' SOUTH ELEVATION



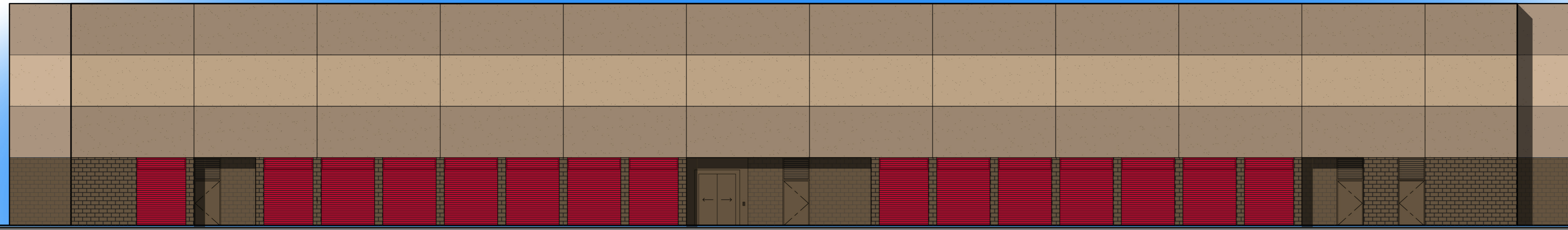
R.V. CANOPY 'B' SOUTH ELEVATION



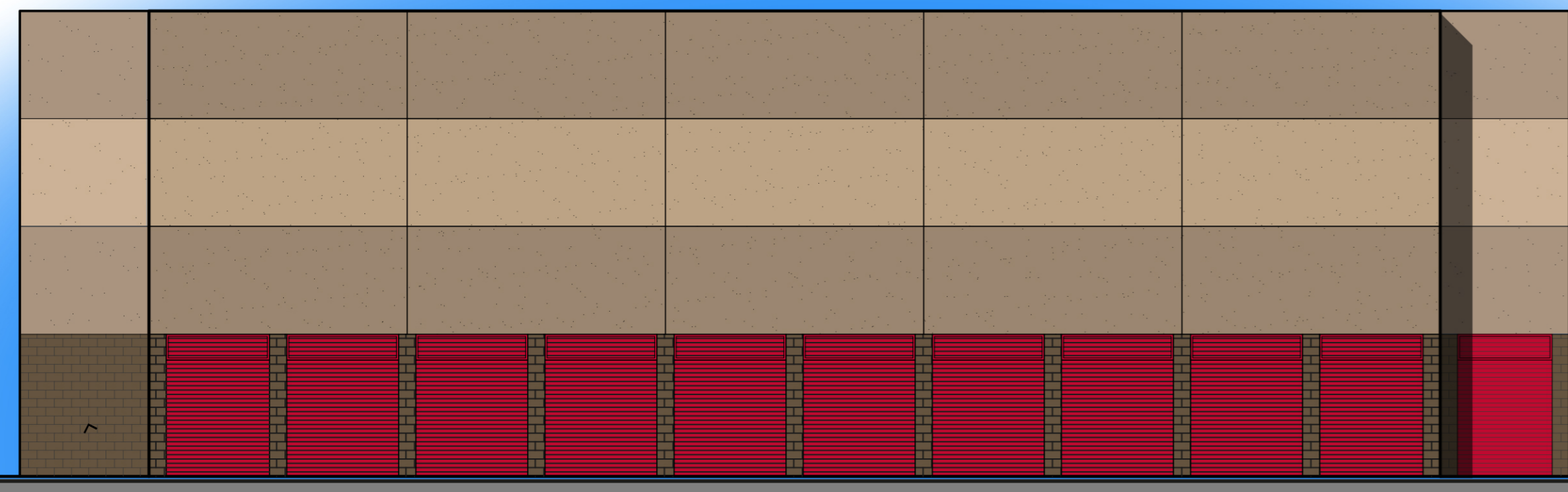
R.V. CANOPY 'D', 'A' & 'B' WEST ELEVATION

COLORS & MATERIALS

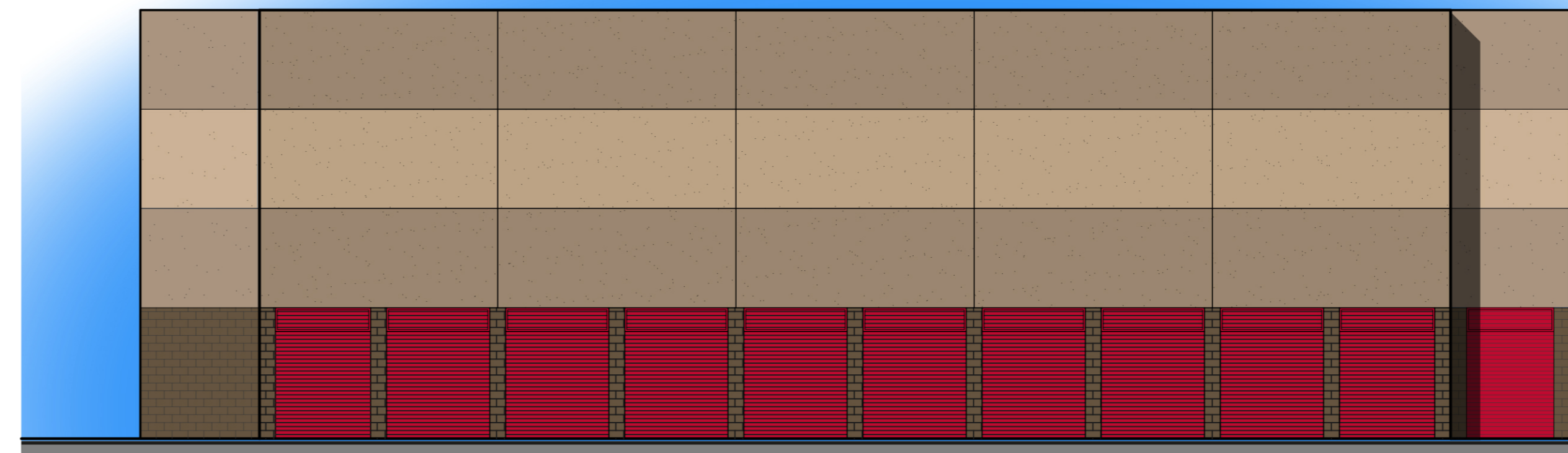
- SECONDARY SMOOTH STUCCO FINISH W/METAL GRID:
PAINT SW# 6101 "SANDS OF TIME"
- PRIMARY SMOOTH STUCCO FINISH W/METAL GRID:
PAINT SW# 6162 "PORTABELLO"
- CMU WITH ELASTOMERIC PAINT FINISH:
PAINT SW#6095 "TOASTY"
- ROLL-UP METAL DOORS / DOOR TRANSOMS:
JANUS INTERNATIONAL "PATRIOT RED"



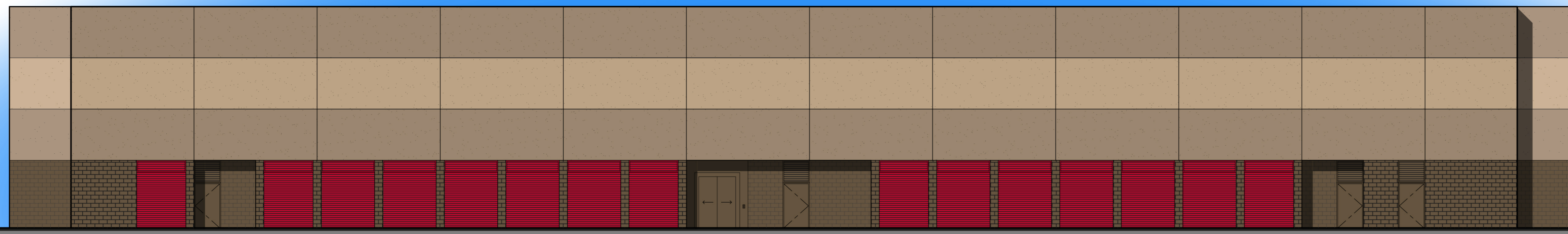
WEST ELEVATION



SOUTH ELEVATION



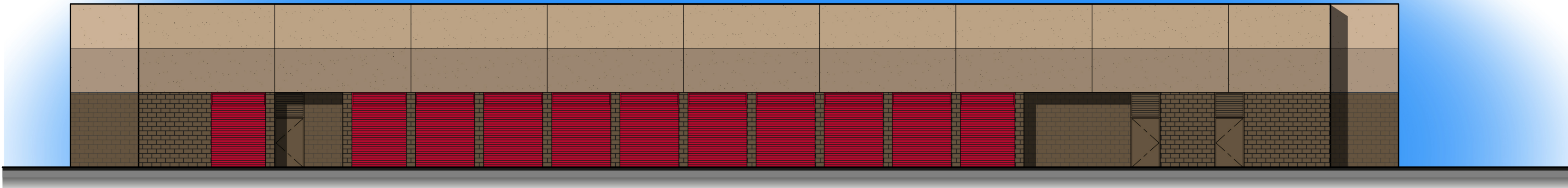
NORTH ELEVATION



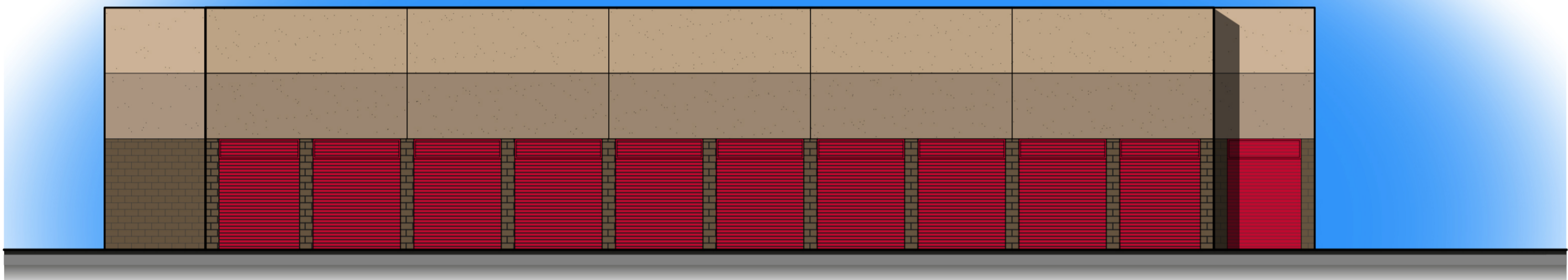
EAST ELEVATION

COLORS & MATERIALS

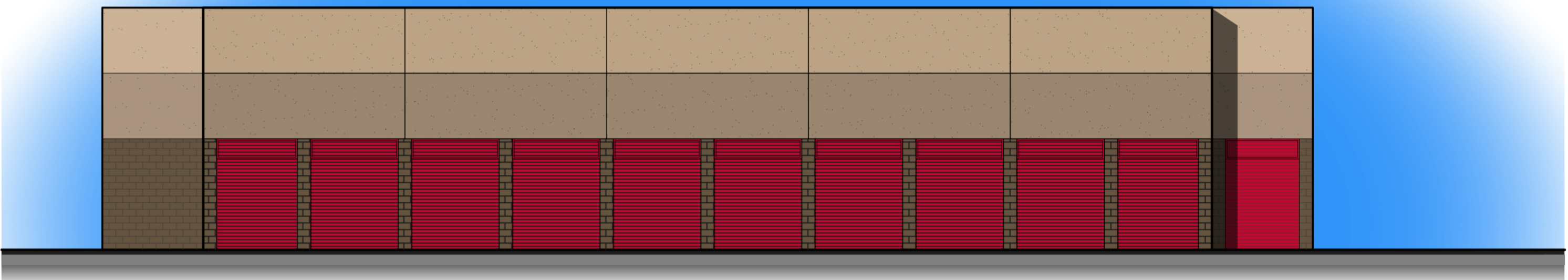
- SECONDARY SMOOTH STUCCO FINISH W/METAL GRID:
PAINT SW# 6101 "SANDS OF TIME"
- PRIMARY SMOOTH STUCCO FINISH W/METAL GRID:
PAINT SW# 6162 "PORTABELLO"
- CMU WITH ELASTOMERIC PAINT FINISH:
PAINT SW#6095 "TOASTY"
- ROLL-UP METAL DOORS / DOOR TRANSOMS:
JANUS INTERNATIONAL "PATRIOT RED"



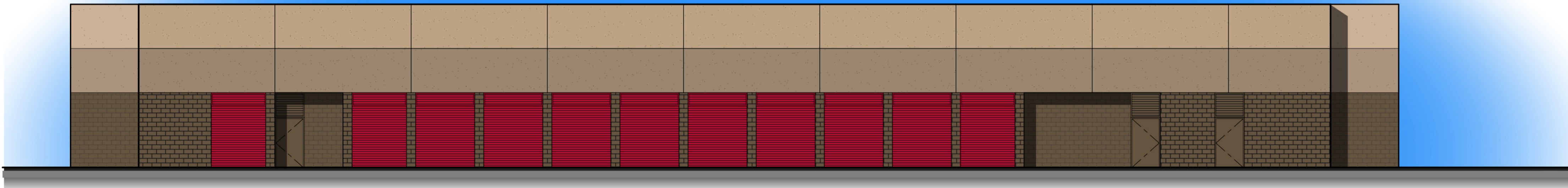
WEST ELEVATION



SOUTH ELEVATION

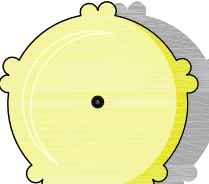
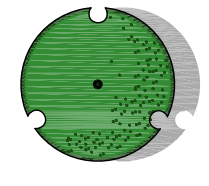
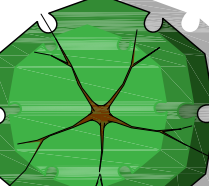
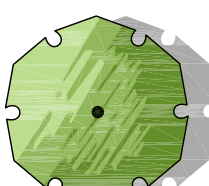
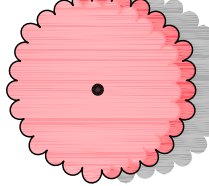















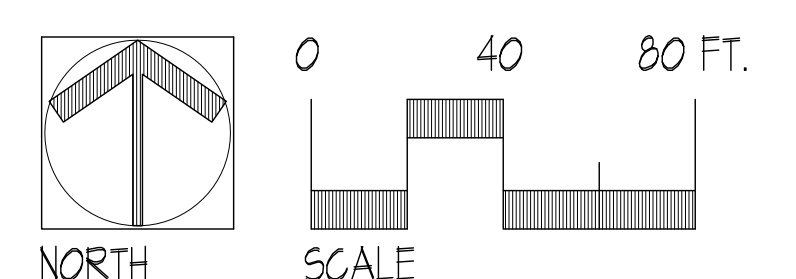
NORTH ELEVATION



EAST ELEVATION

PLANT SCHEDULE

SYMBOL	BOTANICAL / COMMON NAME	CONT	WATER (KC)	QTY	
TREES					
	GINKGO BILOBA 'AUTUMN GOLD' AUTUMN GOLD MAIDENHAIR TREE	24 IN. BOX	MOD. 5	12	
	PRUNUS CAROLINIANA CAROLINA LAUREL CHERRY STANDARD TRUNK	24" BOX	MOD. 5	24	
	QUERCUS ILEX HOLLY OAK	24 IN. BOX	LOW. 2	8	
	TRISTANIA CONFERTA BRISBANE BOX OR OTHER STREET TREE SPECIES	24 IN. BOX	MOD. 5	13	
	X CHITALPA TASHKENTENSIS 'PINK DAWN' PINK DAWN CHITALPA	48" BOX	MOD. 5	2	
SHRUBS					
	AGAVE ATTENUATA AGAVE	5 GAL	LOW. 2	27	
	AGAVE X 'BLUE FLAME' BLUE FLAME AGAVE	5 GAL	LOW. 2	55	
	ALOE SAPONARIA SOAP ALOE	4" POT	LOW. 2	60	
	CISTUS X PURPUREUS ORCHID ROCKROSE	5 GAL	LOW. 2	10	
	DIANELLA REVOLUTA 'DTNOS' BABY BLISS® FLAX LILY	5 GAL	LOW. 2	137	
	EUPHORBIA TIRUCALLI 'STICKS ON FIRE' PENCIL TREE	5 GALLON	LOW. 2	6	
	HESPERALOE PARVIFLORA RED YUCCA	5 GALLON	LOW. 2	80	
	MELALEUCA NESOPHILA PINK MELALEUCA MULTI-TRUNK	5 GALLON	LOW. 2	6	
	ROSMARINUS OFFICINALIS 'TUSCAN BLUE' TUSCAN BLUE ROSEMARY	5 GALLON	LOW. 2	201	
	WESTRINGIA FRUTICOSA 'MORNING LIGHT' MORNING LIGHT COAST ROSEMARY	5 GALLON	LOW. 2	42	
SYMBOL	BOTANICAL / COMMON NAME	CONT	WATER (KC)	SPACING	QTY
GROUND COVERS					
	CAREX PRAEGRACILIS/JUNCUS PATENS SLENDER SEDGE/GREY RUSH	1 GAL	MOD. 5	18" o.c.	5,896 SF
	ROSMARINUS OFFICINALIS 'PROSTRATUS' DWARF ROSEMARY	1 GAL	LOW. 2	24" o.c.	10,531 SF
NON LIVING GROUND COVER					
	BARK MULCH BARK MULCH	3 IN DEPTH			13,694 SF



AHLES
LANDSCAPE
ARCHITECTURE INC.
P.O. Box 1503
Rancho Santa Fe, CA 92067
858.756.8963
email: ala@ahlesland.com
CA# 2538

PROJECT NO.: 2306
ISSUE
INITIAL MAR 23
13 JUL 23
22 SEP 23
23 FEB 24

GRAVES AVENUE RV STORAGE
Santee, California

L-1.1